

**WALLA WALLA REGIONAL AIRPORT
2024 TOWER OPERATIONS**

Month	ITINERANT OPERATIONS					LOCAL OPERATIONS			2024 TOTAL OPS	INC./DEC. PREVIOUS YR	2023 TOTAL OPS
	AC	AT	GA	MI	ITIN OPS	CIVIL	MIL	LOC OPS	TOTAL OPS	INC/DEC	ALL OPS
January	64	142	586	0	792	1,100	0	1,100	1,892	-30.36%	2,717
February	58	155	1,038	3	1,254	2,074	0	2,074	3,328	52.94%	2,176
March	62	220	1,254	6	1,542	1,934	0	1,934	3,476	32.62%	2,621
April	60	218	1,279	0	1,557	2,104	0	2,104	3,661	6.49%	3,438
May	58	211	1,516	6	1,791	2,308	4	2,312	4,103	26.21%	3,251
June	61	206	1,303	4	1,574	1,805	0	1,805	3,379	7.20%	3,152
July	62	223	1,321	0	1,606	3,048	0	3,048	4,654	-6.58%	4,982
August	53	165	973	3	1,194	1874	22	1,896	3,090	14.15%	2,707
September	54	159	897	5	1,115	1,308	1	1,309	2,424	7.40%	2,257
October	53	193	1,643	0	1,889	2,976	0	2,976	4,865	25.03%	3,891
November	48	100	619	2	769	1,446	0	1,446	2,215	5.58%	2,098
December	46	65	272	0	383	434	0	434	817	-50.78%	1,660
TOTAL:	679	2,057	12,701	29	15,466	22,411	27	22,438	37,904	8.45%	34,950

INSTRUMENT OPS (IFR)				
AC	AT	GA	MI	INST OPS
64	81	147	0	292
58	100	206	0	364
62	97	223	4	386
60	113	203	0	376
58	98	170	2	328
61	94	182	0	337
62	62	153	0	277
53	70	110	0	233
54	85	132	3	274
53	113	290	0	456
48	69	140	2	259
46	52	116	0	214
679	1,034	2,072	11	3,796

Notes

**Above operations ONLY DURING TOWER HOURS. 6 AM - 6:30 PM/365 DAYS PER YEAR

**Itinerant Operations: Operation that originates and terminates at different airports.

**Local Operations: Originate & terminate at same airport. Example: A/C stays in pattern or touch & go's

**August-December 2024: ATC Zero on Saturdays due to no staffing

Note: Back Side for Historical Year End Totals

WALLA WALLA REGIONAL AIRPORT HISTORICAL TOWER OPERATIONS

ITINERANT OPERATIONS					TOTAL ITINERANT	LOCAL OPS		TOTAL LOCAL	TOTAL OPERATIONS
Year	AC	AT	GA	MI	ITIN OPS	CIVIL	MIL	LOC OPS	TOTAL OPS
2000	0	3,417	18,261	128	21,806	20,500	166	20,666	42,472
2001	14	2,980	16,680	131	19,805	20,447	12	20,459	40,264
2002	16	3,209	17,872	88	21,185	18,733	82	18,815	40,000
2003	16	3,120	17,476	57	20,669	20,822	26	20,848	41,517
2004	14	3,662	15,454	77	19,207	17,870	40	17,910	37,117
2005	6	2,975	14,445	75	17,501	17,067	28	17,095	34,596
2006	4	3,190	11,323	77	14,594	11,103	23	11,126	25,720
2007	2	2,848	13,211	87	16,148	15,553	16	15,569	31,717
2008	257	2,505	12,791	118	15,671	17,597	0	17,597	33,268
2009	1,707	863	11,269	129	13,968	17,211	4	17,215	31,183
2010	1,024	782	9,935	180	11,921	12,492	2	12,494	24,415
2011	1,008	909	11,623	89	13,629	15,993	0	15,993	29,622
2012	924	922	10,697	97	12,640	12,044	2	12,046	24,686
2013	753	937	11,091	50	12,831	13,782	4	13,786	26,617
2014	948	904	9,194	63	11,109	12,543	0	12,543	23,652
2015	977	845	9,482	51	11,355	10,966	0	10,966	22,321
2016	1,275	1,059	10,750	55	13,139	14,036	0	14,036	27,175
2017	919	1,247	11,373	39	13,578	14,614	14	14,628	28,206
2018	927	1,122	11,403	51	13,503	14,702	6	14,708	28,211
2019	864	1,032	12,354	68	14,318	16,547	8	16,555	30,873
2020	760	1,271	13,507	76	15,614	18,352	14	18,366	33,980
2021	967	1,833	17,761	111	20,672	25,771	21	25,792	46,464
2022	815	1,763	12,624	86	15,288	18,157	69	18,226	33,514
2023	740	2,200	12,798	76	15,814	19,100	36	19,136	34,950
2024	679	2,057	12,701	29	15,466	22,411	27	22,438	37,904

INSTRUMENT OPS (IFR)				TOTAL IFR
AC	AT	GA	MI	
0	2,871	2,979	83	5,933
2	2,492	3,086	88	5,668
16	2,722	2,640	52	5,430
13	2,427	2,199	22	4,661
14	3,091	2,547	14	5,666
4	2,272	2,355	28	4,659
2	2,465	1,808	17	4,292
2	2,300	2,109	21	4,432
254	2,250	2,374	36	4,914
1,704	701	1,951	53	4,409
1,022	673	1,736	96	3,527
1,004	763	1,667	25	3,459
924	784	1,655	42	3,405
753	761	1,610	26	3,150
947	815	1,226	37	3,025
977	761	1,464	21	3,223
1,275	812	1,642	25	3,754
919	811	1,850	20	3,600
927	850	1,903	20	3,700
864	728	2,725	21	4,338
760	695	2,148	21	3,624
965	1,038	3,324	42	5,369
815	1,028	2,740	28	4,611
738	1,077	2,394	19	4,228
679	1,034	2,072	11	3,796

Notes

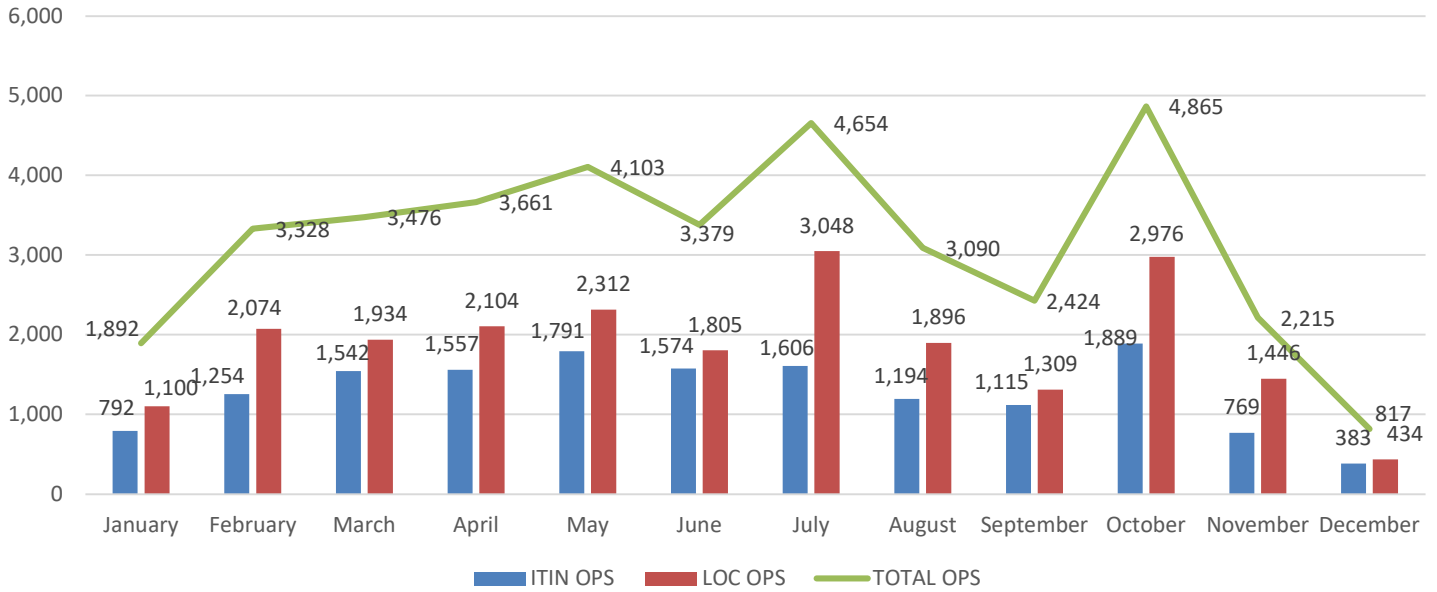
**Above operations ONLY DURING TOWER HOURS. 12.5 HOURS/DAY/365 DAYS PER YEAR

**In late 2008 Alaska Air aircraft went from AT to AC. Q-200/37 seat aircraft to Q-400/76 seat aircraft.

**Itinerant Operations: Operation that originates and terminates at different airports.

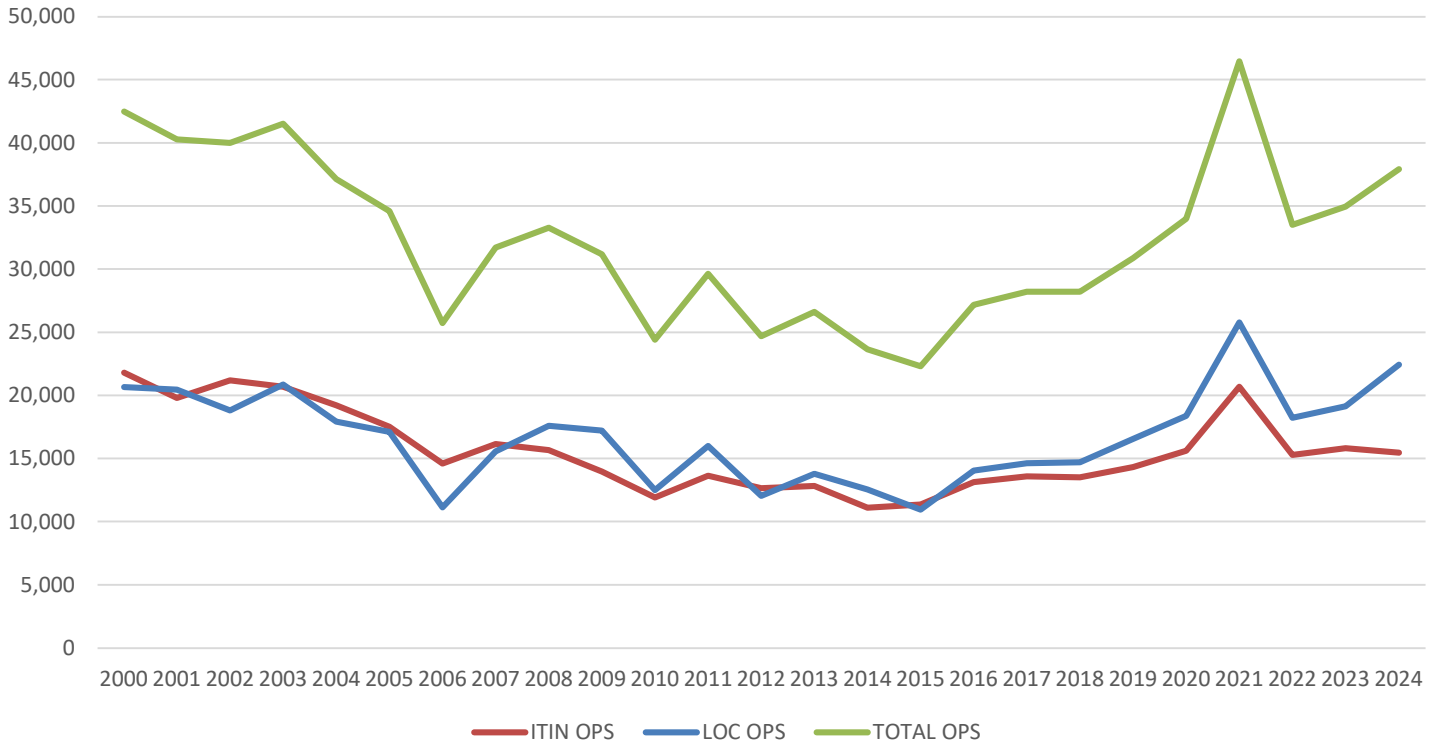
**Local Operations: Originate & terminate at same airport. Example: A/C stays in pattern or touch & go's

2024 - ALW Air Traffic Control Operations



**August: ATC Zero on Saturdays due to no staffing

Historical: (2000 - 2024 YTD)- ALW Air Traffic Control Operations



WALLA WALLA REGIONAL AIRPORT

Aircraft Operations

***Represents operations during ATCT Hours (6 AM - 6:30 PM Daily)**

Year	*Air Carrier Operations	*Air Taxi Operations	*General Aviation Operations	*Military Operations	*Total
2024 YTD	679	2,057	35,112	56	37,904
2023	740	2,200	31,898	112	34,950
2022	815	1,763	30,781	155	33,514
2021	967	1,833	43,532	132	46,464
2020	760	1,271	31,859	90	33,980
2019	864	1,032	28,901	76	30,873
2018	927	1,122	26,105	57	28,211
2017	919	1,247	25,987	53	28,206
2016	1,275	1,059	24,786	55	27,175
2015	977	845	20,448	51	22,321
2014	948	904	21,737	63	23,652
2013	753	937	24,873	54	26,617
2012	924	922	22,741	99	24,686
2011	1,008	909	27,616	89	29,622
2010	1,024	782	22,427	182	24,415
2009	1,707	863	28,480	133	31,183
2008	257	2,505	30,388	118	33,268
2007	2	2,848	28,764	87	31,717
2006	4	3,190	22,426	100	25,720
2005	6	2,975	31,512	103	34,596
2004	14	3,662	33,324	117	37,117
2003	16	3,120	38,298	83	41,517
2002	16	3,209	36,605	170	40,000
2001	14	2,980	37,127	143	40,264
2000	0	3,417	38,761	294	42,472
1999	3	3,874	37,744	292	41,913
1998	2	4,187	38,147	295	42,631
1997	0	7,220	42,943	280	50,443
1996	4	5,446	44,835	90	50,375
1995	0	5,232	37,978	749	43,959
1994	0	6,324	41,997	286	48,607
1993	2	6,886	44,208	201	51,297
1992	4	7,061	43,428	148	50,641
1991	0	6,512	37,787	228	44,527
1990	2	7,486	41,537	222	49,247
1989	0	6,315	45,615	215	52,145
1988	0	5,774	42,003	168	47,945
1987	7	4,979	41,984	214	47,184
1986	11	4,393	41,023	292	45,719
1985	0	5,677	40,621	222	46,520
1984	0	5,105	47,994	272	53,371
1983	6	5,294	53,294	691	59,285
1982	12	5,727	51,517	1301	58,557
1981	0	8,080	49,850	805	58,735
1980	0	11,378	47,867	36	59,281
1979	0	13,498	45,258	2	58,758
1978	4	14,628	54,551	0	69,183
1977	4	9,311	55,907	18	65,240
1976	0	7,011	55,000	12	62,023