

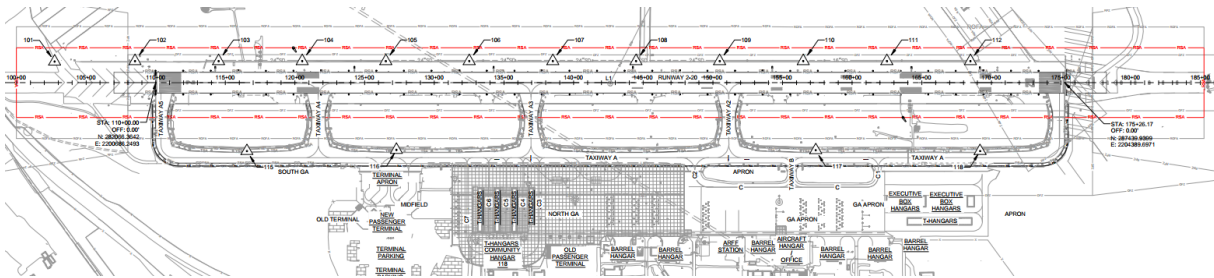


RUNWAY 2/20 SAFETY AREA (RSA) DRAINAGE & ELECTRICAL PROJECT

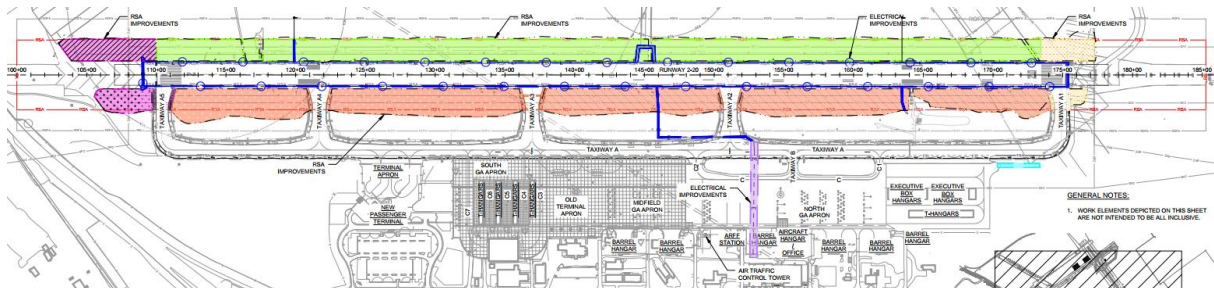
The project intends to construct drainage and electrical improvements in the Runway Safety Area. Project work includes: reduction in the airfield pavement shoulders, removal of 1940's concrete trench drain, replacement of drainage facilities, excavation and grading, and replacement of runway lighting and signage infrastructure.

Runway Safety Area = 250 ft. from Runway Centerline & 1,000 ft. from Runway End Threshold

[Link to RSA Limits Plan Sheet](#)



[Link to Overall Work Areas Plan Sheet](#)



CONTRACTOR

Nelson Construction Corporation

ENGINEER OF RECORD

Mead & Hunt Engineering

PROJECT COST

Project Budget: \$7,560,045

Funding Sources: FAA Discretionary Grant = \$6,321,590 / Airport Share = \$280,894 / WSDOT Grant = \$277,784

PLAN SHEETS

- [Work Area 1A, 1B, 1C](#)
- [Work Area 2A, 2B](#)
- [Work Area 3A, 3B, 3C](#)
- [Work Area 4A, 4B](#)
- [Work Area 5B](#)

RUNWAY RESTRICTIONS

Runway will remain open and operational for most aircraft operations during construction.

- **(There will be a 2-night runway closure towards the end of the construction season to change-out all runway HIRL lights.)**
- **NO RUNWAY RESTRICTIONS During Construction Hours for B-II Aircraft or Smaller:**
 - Examples of B-II aircraft or smaller: Beech Bonanzas, Beech King Airs, Cessna Citation I, II, III, Cessna 150, 170, 172, Embraer 120, Gulfstream I, Learjet 28/29, Piper Cheyenne / Navajo, Pilatus PC12.
 - B-II Aircraft or smaller

Table 1-1. Aircraft Approach Category (AAC)

AAC	V _{REF} /Approach Speed
A	Approach speed less than 91 knots
B	Approach speed 91 knots or more but less than 121 knots

Table 1-2. Airplane Design Group (ADG)

Group #	Tail Height	Wingspan
I	< 20 ft (< 6.1 m)	< 49 ft (< 14.9 m)
II	20 ft to < 30 ft (6.1 m to < 9.1 m)	49 ft to < 79 ft (14.9 m to < 24.1 m)

- **RUNWAY RESTRICTIONS During Construction Hours for B-III Aircraft or Larger:**
 - Examples of B-III Aircraft or larger: Bombardier Global Express, Embraer 175, GS II/III/IV/V.
 - B-III Aircraft or larger

Table 1-1. Aircraft Approach Category (AAC)

AAC	V _{REF} /Approach Speed
A	Approach speed less than 91 knots
B	Approach speed 91 knots or more but less than 121 knots
C	Approach speed 121 knots or more but less than 141 knots
D	Approach speed 141 knots or more but less than 166 knots
E	Approach speed 166 knots or more

Table 1-2. Airplane Design Group (ADG)

Group #	Tail Height	Wingspan
I	< 20 ft (< 6.1 m)	< 49 ft (< 14.9 m)
II	20 ft to < 30 ft (6.1 m to < 9.1 m)	49 ft to < 79 ft (14.9 m to < 24.1 m)
III	30 ft to < 45 ft (9.1 m to < 13.7 m)	79 ft to < 118 ft (24.1 m to < 36 m)
IV	45 ft to < 60 ft (13.7 m to < 18.3 m)	118 ft to < 171 ft (36 m to < 52 m)
V	60 ft to < 66 ft (18.3 m to < 20.1 m)	171 ft to < 214 ft (52 m to < 65 m)
VI	66 ft to < 80 ft (20.1 m to < 24.4 m)	214 ft to < 262 ft (65 m to < 80 m)

<u>Day(s)</u>	<u>Times WITH Rwy Restrictions</u>	<u>Times with NO Rwy Restrictions</u>
Monday – Friday	6:00 AM – 11:30 AM	11:30 AM – 2:30 PM
Monday – Friday	2:30 PM – 6:00 PM	6:00 PM – 6:00 AM
Saturday – Sunday	NO RESTRICTIONS	NO RESTRICTIONS

CONSTRUCTION SCHEDULE & NAVIGATIONAL AID IMPACTS

April 1 – 30, 2024: Work Area 3C & 4A

Plan Sheet: [Work Area 3A, 3B, 3C](#)

Plan Sheet: [Work Area 4A, 4B](#)

NAVAID Impacts		
Item/NAVAID	WA 3C	WA 4A
VOR/DME (FAA)	No Impact	No Impact
Localizer (FAA)	No Impact	No Impact
Glideslope (FAA)	No Impact	No Impact
RW 2 PAPI (FAA)	No Impact	No Impact
RW 20 MALSR (FAA)	Protect	Protect
RW 20 PAPI (Airport)	No Impact	No Impact
RW 2 REIL (Airport)	No Impact	No Impact
RW 2/20 HIRLS (Airport)	No Impact	No Impact
RW 2 Threshold Lights	No Impact	No Impact
RW 20 Threshold Lights	Protect	No Impact
RDR Signs	No Impact	No Impact

TAXIWAY CLOSURES: NONE

May 1 – 29, 2024: Work Area 1A & 4B

Plan Sheet: [Work Area 1A, 1B, 1C](#)

Plan Sheet: [Work Area 4A, 4B](#)

NAVAID Impacts		
Item/NAVAID	WA 1A	WA 4B
VOR/DME (FAA)	Deactivated	Deactivated
Localizer (FAA)	Deactivated	Deactivated
Glideslope (FAA)	Deactivated	Deactivated
RW 2 PAPI (FAA)	No Impact	Protect
RW 20 MALSR (FAA)	No Impact	No Impact
RW 20 PAPI (Airport)	No Impact	No Impact
RW 2 REIL (Airport)	Deactivate / Protect	Deactivate / Protect
RW 2/20 HIRLS (Airport)	No Impact	No Impact
RW 2 Threshold Lights	Protect	No Impact
RW 20 Threshold Lights	No Impact	No Impact
RDR Signs	No Impact	No Impact

TAXIWAY CLOSURES: NONE

May 30 – June 20, 2024: Work Area 1B & 1CPlan Sheet: [Work Area 1A, 1B, 1C](#)

NAVAID Impacts		
Item/NAVAID	WA 1B	WA 1C
VOR/DME (FAA)	Deactivated	Deactivated
Localizer (FAA)	Deactivated	Deactivated
Glideslope (FAA)	Deactivated	Deactivated
RW 2 PAPI (FAA)	No Impact	No Impact
RW 20 MALSR (FAA)	No Impact	No Impact
RW 20 PAPI (Airport)	No Impact	No Impact
RW 2 REIL (Airport)	Deactivate / Protect	No Impact
RW 2/20 HIRLS (Airport)	No Impact	No Impact
RW 2 Threshold Lights	Protect	No Impact
RW 20 Threshold Lights	No Impact	No Impact
RDR Signs	No Impact	No Impact

TAXIWAY CLOSURES: TWY A5**June 21 – July 25, 2024: Work Area 2A**Plan Sheet: [Work Area 2A, 2B](#)

NAVAID Impacts	
Item/NAVAID	WA 2A
VOR/DME (FAA)	Deactivated
Localizer (FAA)	Deactivated
Glideslope (FAA)	Deactivated
RW 2 PAPI (FAA)	No Impact
RW 20 MALSR (FAA)	No Impact
RW 20 PAPI (Airport)	No Impact
RW 2 REIL (Airport)	No Impact
RW 2/20 HIRLS (Airport)	No Impact
RW 2 Threshold Lights	No Impact
RW 20 Threshold Lights	No Impact
RDR Signs	No Impact

TAXIWAY CLOSURES: TWY A3 & A4

July 26 – October 1, 2024: Work Area 2B

Plan Sheet: [Work Area 2A, 2B](#)

NAVAID Impacts	
Item/NAVAID	WA2B
VOR/DME (FAA)	No Impact
Localizer (FAA)	Deactivated
Glideslope (FAA)	Deactivated
RW 2 PAPI (FAA)	No Impact
RW 20 MALSR (FAA)	No Impact
RW 20 PAPI (Airport)	Protect
RW 2 REIL (Airport)	No Impact
RW 2/20 HIRLS (Airport)	No Impact
RW 2 Threshold Lights	No Impact
RW 20 Threshold Lights	No Impact
RDR Signs	No Impact

TAXIWAY CLOSURES: TWY A2 & A3

September 24 – October 9, 2024: Work Area 3A & 3B

Plan Sheet: [Work Area 3A, 3B, 3C](#)

NAVAID Impacts		
Item/NAVAID	WA 3A	WA 3B
VOR/DME (FAA)	No Impact	No Impact
Localizer (FAA)	Deactivated	Deactivated
Glideslope (FAA)	Deactivated	Deactivated
RW 2 PAPI (FAA)	No Impact	No Impact
RW 20 MALSR (FAA)	Protect	No Impact
RW 20 PAPI (Airport)	No Impact	No Impact
RW 2 REIL (Airport)	No Impact	No Impact
RW 2/20 HIRLS (Airport)	No Impact	No Impact
RW 2 Threshold Lights	No Impact	No Impact
RW 20 Threshold Lights	Protect	Protect
RDR Signs	No Impact	No Impact

TAXIWAY CLOSURES: TWY A1

TENTATIVE! October 14 - 16, 2024 FULL RUNWAY NIGHT-TIME CLOSURE

Installation of LED HIRLS

BE SURE TO CHECK [NOTAMS](#) FOR UP-TO-DATE INFO!